



How to fix our rivers

Mark Lloyd, Chief Executive

Content

1. Brief introduction to The Rivers Trust and CaBA
 2. Overview of the challenges facing the water sector
 3. Opportunities for nature-based, integrated solutions
 4. Need for better data
-

The Rivers Trust Movement in 2023-24



Eased, passed,
or removed
126
fish barriers



Delivered
540
river cleans



Opened up
544
kilometres of river
for fish passage



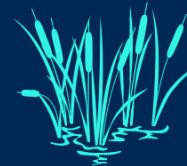
Completed
58
SUDS projects



Installed
1,112
natural flood
management measures



Worked with
3,739
farmers



Created or restored
894
hectares of wetlands



Planted
466,990
trees



Engaged with
20,855
volunteers



Inspired
33,896
school children

Catchment Based Approach



For thriving rivers and communities

Catchment Based Approach

Celebrating the benefits of a collaborative approach for people and wildlife

Action and Activities in 2022/23

This reporting was for projects and activities taking place up to March 2023.



103 partnerships
reported their work

25YEP
Reporting data show links to the
25 Year Environment Plan

848 project
details submitted

Building Partnerships



568
CaBA meetings across
the country

93% of the partnerships work
with their local water company
and
79%
have the water company involved
in funding or delivery

National Support



8 national-scale
working groups
building capacity and expertise

Connecting People with the Environment

43,136

primary stakeholders engaged
in 2022/23



29,290
volunteers & citizen scientists actively
involved in projects

8,741
farmers engaged, often with on-
farm measures implemented

109,660
Other people were engaged in
projects

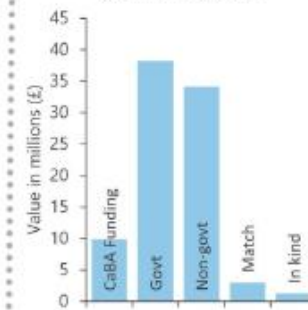
Funding & Financing

£1 : £3.5

For every £1 directly invested by
the Government, CaBA
partnerships have raised £3.5
from non-government funders
plus

£38.2 million

of wider government funding
invested via a collaborative
catchment approach



Improving Biodiversity

1583ha
habitat created

95 barriers
to fish migration mitigated

311
projects tackled ecological
quality of waterbodies

1,060km
riverbank controlled for
specific invasive species

Clean & Plentiful Water

238
projects tackling diffuse and
point source pollution &
improving water quality

Sectors

**Agriculture and rural
land management**
62%

Water industry
54%

Urban and transport
26%

Activities

① **Poor nutrient management
(fertiliser)** 34%

② **Poor livestock
management** 25%

③ **Poor soil management** 16%

④ **Farm Infrastructure** 4%

⑤ **Land drainage** 5%

⑥ **Continuous
sewage discharge** 36%

⑦ **Intermittent sewage
discharge** 11%

⑧ **Groundwater abstraction** 6%

⑨ **Surface water abstraction** 3%

⑩ **Urbanisation** 11%

⑪ **Transport drainage** 5%

⑫ **Misconnections** 4%

⑬ **Flood protection** 3%

⑭ **Contaminated land** 2%

⑮ **Industry discharge** 4%

⑯ **Mining** 3%

⑰ **Drought** 3%

⑱ **Barriers** 13%

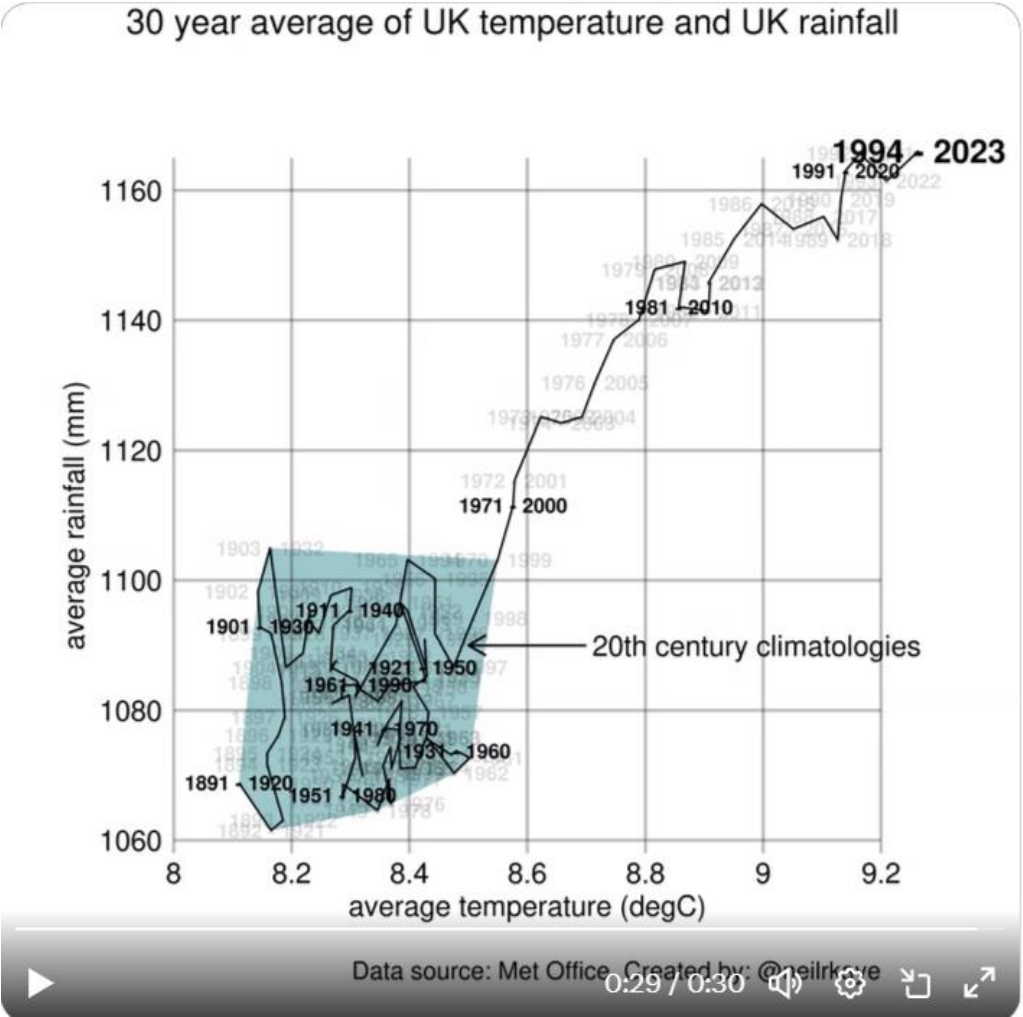
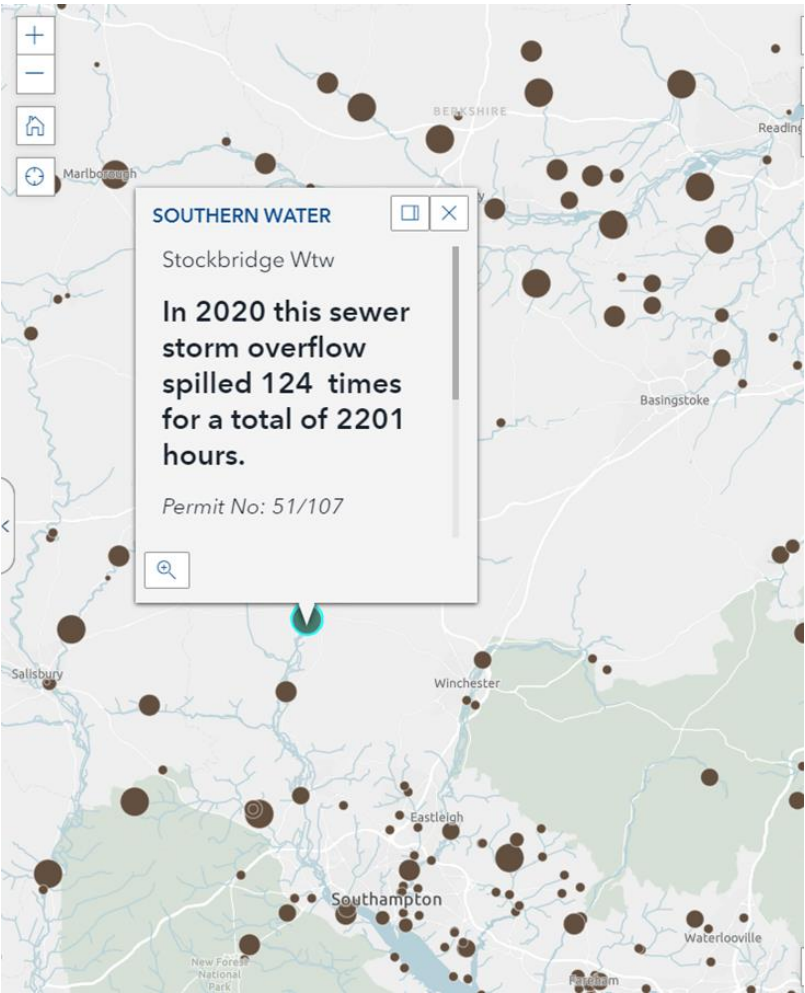
⑲ **Private sewage treatment** 8%

⑳ **Invasive non-native species** 3%

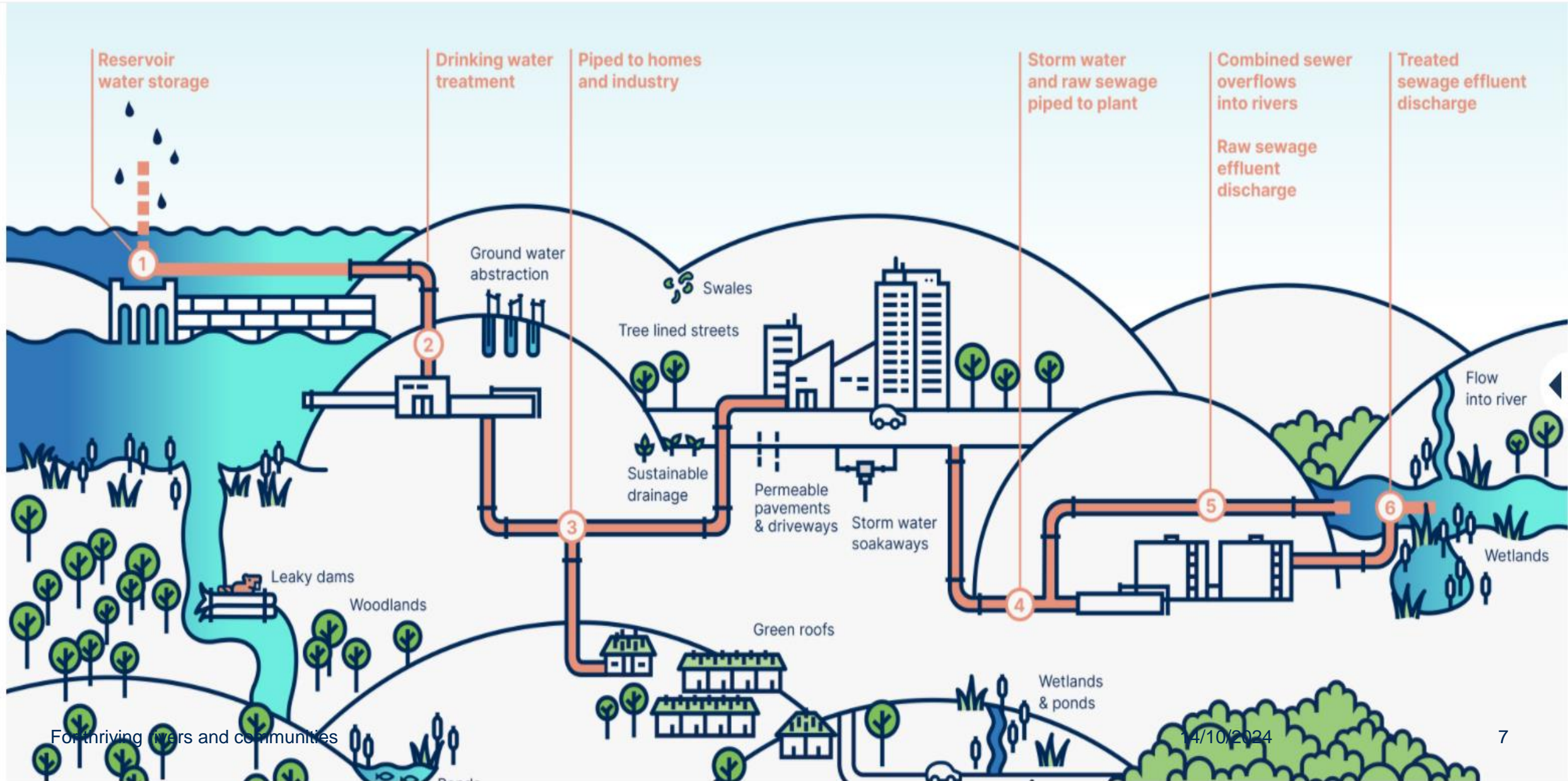
㉑ **Septic tanks** 2%



Too much, too little, too dirty, too little nature



Nature & Catchment Solutions = resilience and value



Land Management

- Biggest problem for rivers
- Surface & river flooding, drought, pollution, nature
- Best value for money and most rapid results
- Look upstream – soil is key



Sustainable Drainage

Biodiverse

SuDS can be biodiverse landscape features that deliver many benefits

Flexible

SuDS includes landscape features and engineered hard components that can be integrated to manage surface water runoff

Slow the flow

SuDS are designed to slow water down and treat it before it enters our watercourses and sewers

Mimic nature

SuDS mimic nature and manage rainfall close to where it falls

Resilience

SuDS provide greater resilience to the challenges of climate change and population growth

Cost effective

SuDS are able to reduce development costs and help to deliver housing and workplaces

Derbyshire Street Pocket Park, London



SuDS create attractive, pleasant and useful places

Rednock School, Gloucestershire



SuDS create flourishing and ecologically diverse environments

Queen Mary's Walk, Llanelli



SuDS manage surface water runoff flows and volumes from developments and make best use of water

Lamb Drove, Cambridgeshire



SuDS treat a wide range of pollutants in surface water runoff



susdrain

A good SuDS scheme will work with the opportunities of a site to deliver improvements in flood risk management, water quality, amenity and biodiversity making great places to live

Slow the flow, purify pollutants, restore aquifers



Green/blue Vs Grey



- ✓ Effluent treatment, slightly higher risk
- ✓ Emissions negative
- ✓ Nature-rich
- ✓ Hydrological benefits
- ✓ Amenity value
- ✓ Community engagement



- ✓ Effluent treatment, greater confidence level
- X Major emissions in construction & operation
- X Nature-destructive
- X No benefits for flooding or water resources
- X Reliance on chemicals
- X Public excluded

Nature Recovery

WINEP

FCRM

BNG

Carbon offsets

Nutrient Neutrality

ELMS

Water Resources budgets

CSR funding

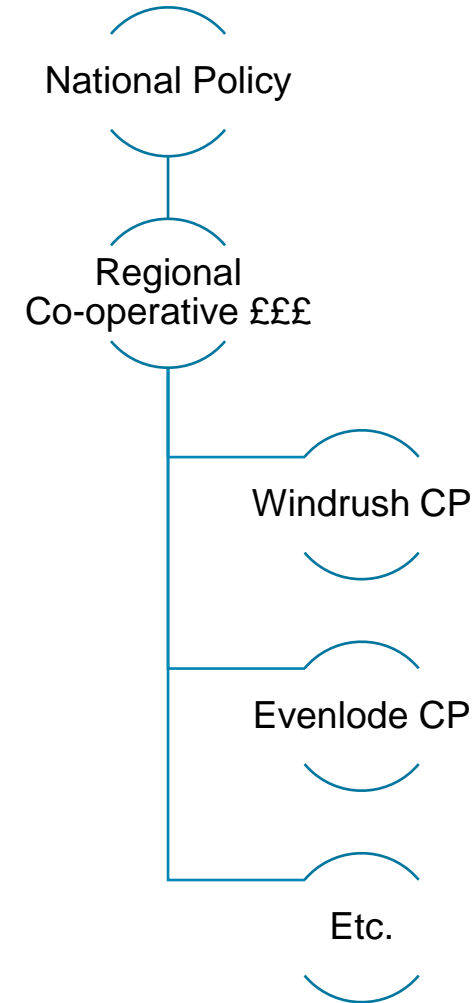
Urban regeneration funds

***We need a blend of
financial measures
to deliver integrated
solutions with
multiple benefits***



Catchment governance – systems thinking

- 105 Catchment partnerships
 - Local plans, opportunities and delivery
- Regional ‘missing middle’
 - Money
 - Mandate
 - Intelligent, collaborative decision-making
- Delivery of national targets through integrated delivery

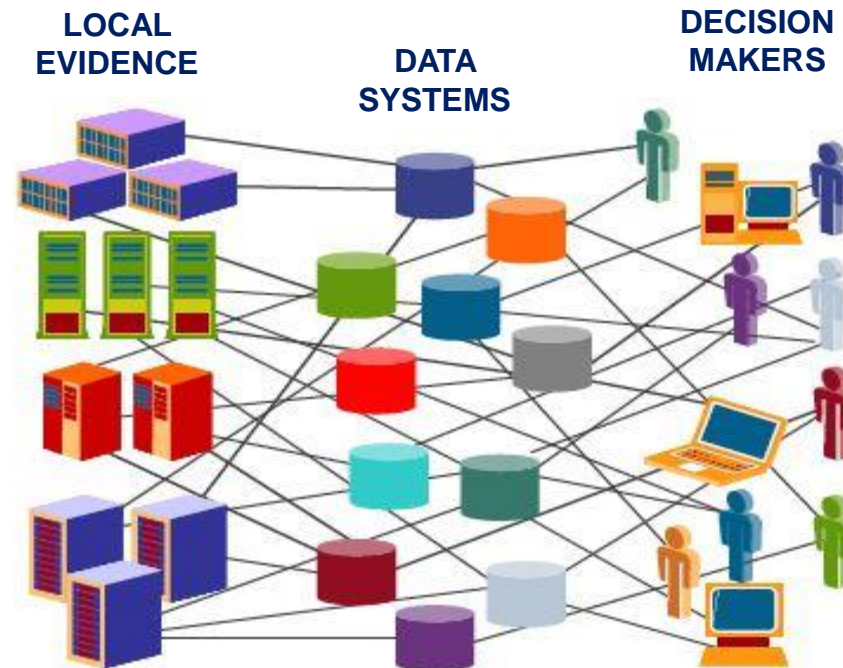


To make water systems more resilient to current and future threats, we need integrated reliable data to inform better decisions...

Instead, we currently have...

Data and evidence gaps

Mind the evidence gap

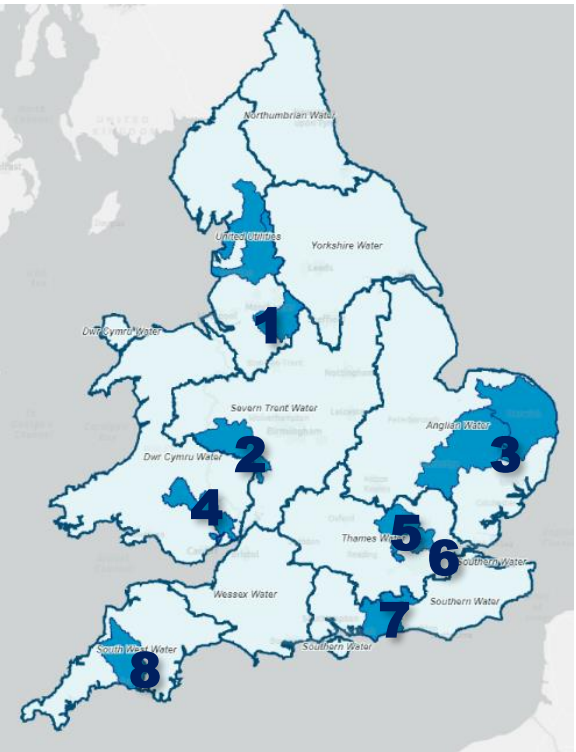
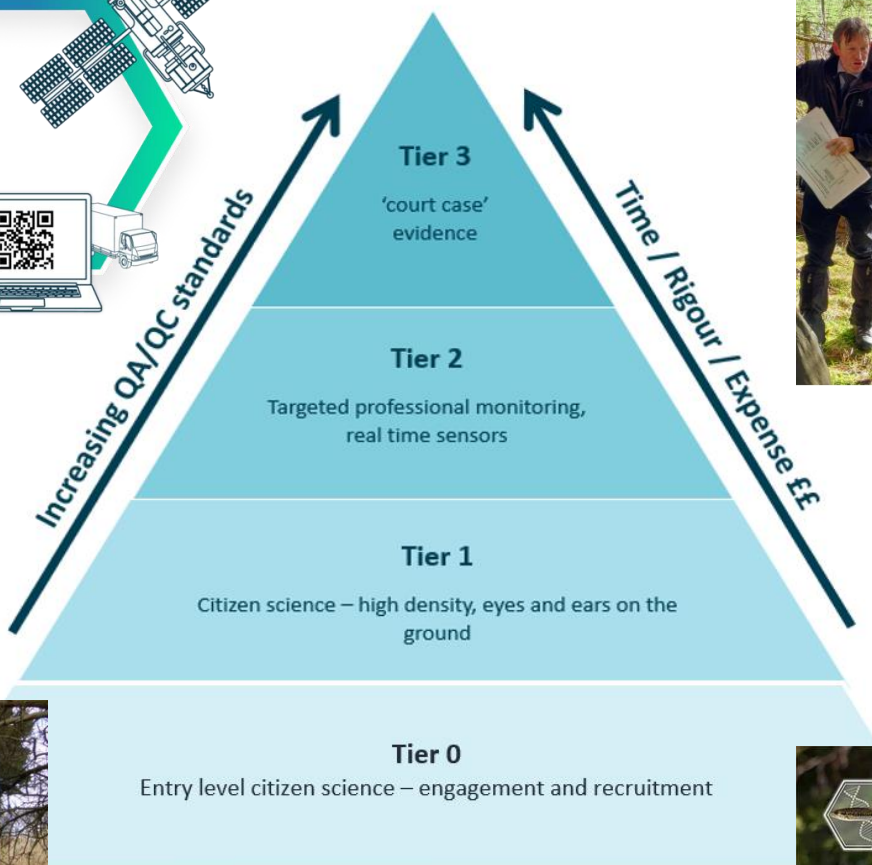


Blind spots in decision-making



Fragmentation and complexity

CaSTCo will deliver high quality, cost-effective evidence



The way forward



- 1. Integrate plans and funding streams to deliver best value nature-based and catchment solutions with multiple benefits**
 - 2. Focus the role of regulators on regulation**
 - 3. Better & more data to inform decision-making and monitor impacts of interventions**
 - 4. Support new governance frameworks to drive systems thinking and integrated delivery**
-