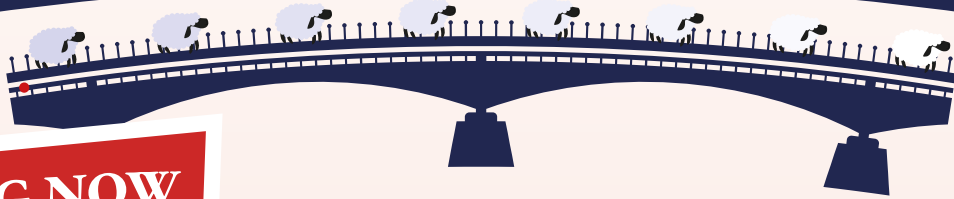




# The Worshipful Company of Woolmen's



## SHEEP DRIVE



BOOKING NOW  
**LIVE**  
9TH MAY

Please visit the following link to book your places on Tuesday 9th May 2023

[www.sheepdrive.london/events](http://www.sheepdrive.london/events)

### HOW TO GET THERE



### HOW TO BOOK

#### WEBSITE

[www.sheepdrive.london/events](http://www.sheepdrive.london/events)

#### EMAIL

*(for queries only)*

[sheepdriveteamenquiries@woolmen.com](mailto:sheepdriveteamenquiries@woolmen.com)

The Worshipful Company of Woolmen  
Charity No: 1188231

